

EXHIBIT A

YALE METROPOLITAN DISTRICT NO. 2

A PARCEL OF LAND SITUATED IN SECTION 30, TOWNSHIP 4 SOUTH, RANGE 65 WEST OF THE SIXTH PRINCIPAL MERIDIAN, CITY OF AURORA, COUNTY OF ARAPAHOE, STATE OF COLORADO, BEING MORE PARTICULARLY DESCRIBED AS FOLLOWS:

BEGINNING AT THE NORTHWEST CORNER OF SAID SECTION 30, WHENCE THE NORTH LINE OF THE NORTHWEST QUARTER OF SAID SECTION 30 BEARS NORTH 89°22'12" EAST, A DISTANCE OF 2,640.16 FEET, WITH ALL BEARINGS HEREIN RELATIVE THERETO;

THENCE NORTH 89°22'12" EAST, ALONG SAID NORTH LINE, A DISTANCE OF 1,370.93 FEET;

THENCE SOUTH 00°23'47" EAST, A DISTANCE OF 211.57 FEET;

THENCE SOUTH 46°30'27" WEST, A DISTANCE OF 158.34 FEET;

THENCE SOUTH 26°02'14" WEST, A DISTANCE OF 290.03 FEET;

THENCE NORTH 85°17'12" WEST, A DISTANCE OF 156.22 FEET TO THE BEGINNING OF A NON-TANGENT CURVE CONCAVE NORTHWESTERLY HAVING A RADIUS OF 780.00 FEET, THE RADIUS POINT OF SAID CURVE BEARS NORTH 85°17'11" WEST;

THENCE SOUTHWESTERLY ALONG SAID CURVE THROUGH A CENTRAL ANGLE OF 40°19'06", AN ARC LENGTH OF 548.88 FEET;

THENCE SOUTH 45°01'55" WEST, A DISTANCE OF 308.01 FEET;

THENCE SOUTH 36°41'27" EAST, A DISTANCE OF 228.14 FEET;

THENCE SOUTH 26°28'20" EAST, A DISTANCE OF 334.61 FEET;

THENCE SOUTH 11°45'07" EAST, A DISTANCE OF 383.60 FEET;

THENCE SOUTH 27°05'04" EAST, A DISTANCE OF 350.82 FEET;

THENCE SOUTH 79°09'30" EAST, A DISTANCE OF 174.30 FEET;

THENCE SOUTH 50°41'20" EAST, A DISTANCE OF 130.40 FEET;

THENCE SOUTH 18°58'04" EAST, A DISTANCE OF 340.62 FEET;

THENCE SOUTH 01°10'51" EAST, A DISTANCE OF 352.31 FEET;

THENCE SOUTH 18°46'37" WEST, A DISTANCE OF 373.12 FEET;

THENCE SOUTH 76°00'46" WEST, A DISTANCE OF 241.30 FEET TO THE BEGINNING OF A NON-TANGENT CURVE CONCAVE EASTERLY HAVING A RADIUS OF 710.00 FEET, THE RADIUS POINT OF SAID CURVE BEARS NORTH 76°00'48" EAST;

THENCE NORTHERLY ALONG SAID CURVE THROUGH A CENTRAL ANGLE OF 13°44'59", AN ARC LENGTH OF 170.39 FEET;

THENCE NORTH 00°14'13" WEST, A DISTANCE OF 131.56 FEET TO THE BEGINNING OF A TANGENT CURVE CONCAVE SOUTHWESTERLY HAVING A RADIUS OF 780.00 FEET;

THENCE NORTHWESTERLY ALONG SAID CURVE THROUGH A CENTRAL ANGLE OF 89°58'39", AN ARC LENGTH OF 1,224.91 FEET;

THENCE SOUTH 89°47'08" WEST, A DISTANCE OF 175.27 FEET TO THE BEGINNING OF A TANGENT CURVE CONCAVE NORTHEASTERLY HAVING A RADIUS OF 30.00 FEET;

THENCE NORTHWESTERLY ALONG SAID CURVE THROUGH A CENTRAL ANGLE OF 90°00'00", AN ARC LENGTH OF 47.12 FEET;

THENCE SOUTH 89°32'59" WEST, A DISTANCE OF 59.81 FEET TO A POINT ON THE WEST LINE OF THE NORTHWEST QUARTER OF SAID SECTION 30;

THENCE NORTH 00°27'01" WEST, ALONG SAID WEST LINE, A DISTANCE OF 2,524.69 FEET TO THE **POINT OF BEGINNING**.

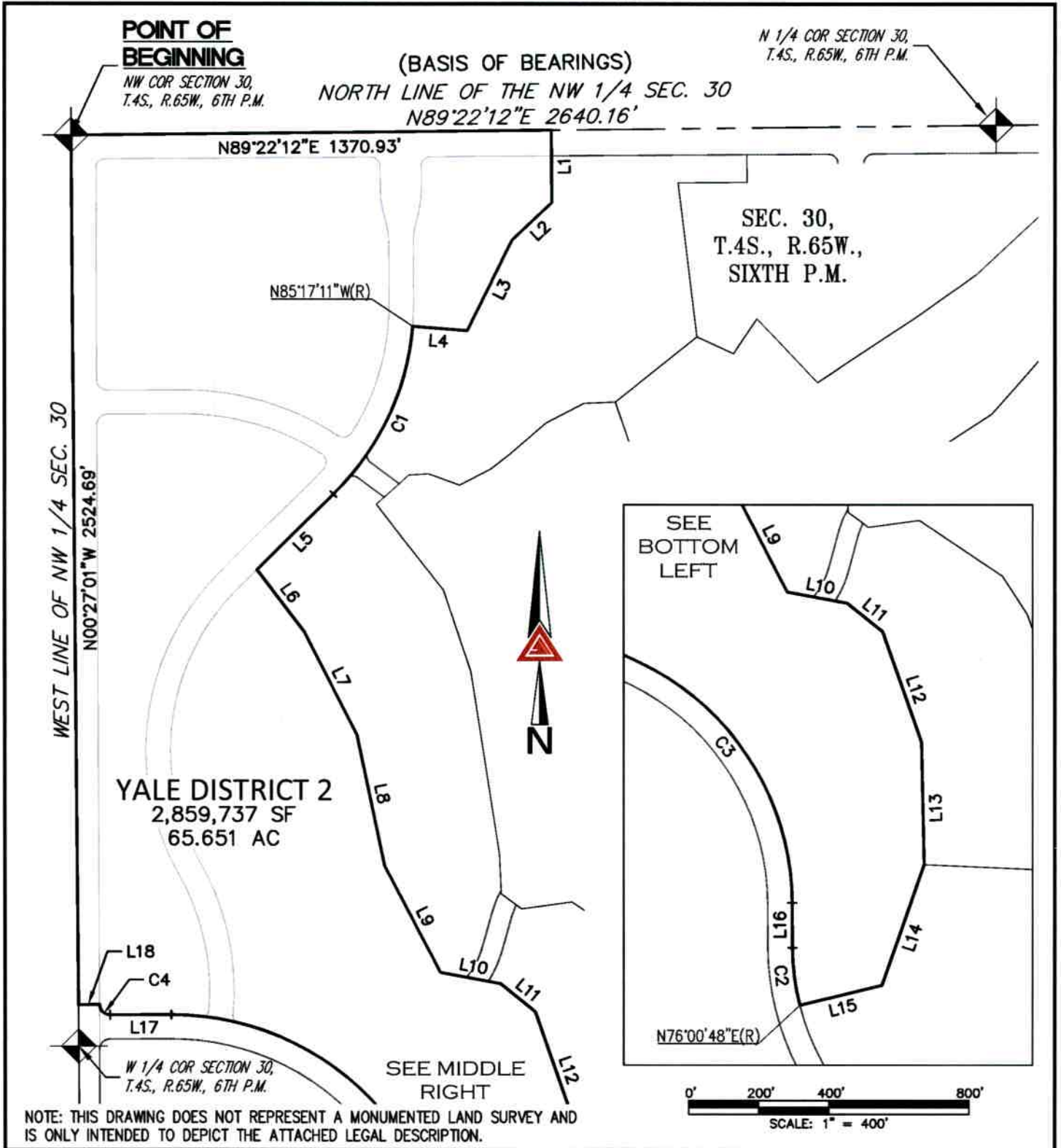
CONTAINING AN AREA OF 65.651 ACRES, (2,859,737 SQUARE FEET), MORE OR LESS.

ILLUSTRATION ATTACHED AND MADE A PART HEREOF.



JAMES E. LYNCH, PLS 37933
FOR AND ON BEHALF OF AZTEC CONSULTANTS, INC.
300 E. MINERAL AVE., SUITE 1, LITTLETON, CO 80122
303-713-1898

ILLUSTRATION TO EXHIBIT A



PATH:
 DWG NAME: YALE MD 2.DWG
 DWG: JEL CHK: JRW
 DATE: 12/8/2021
 SCALE: 1" = 400'


AZTEC
 CONSULTANTS, INC.

300 East Mineral Ave,
 Suite 1
 Littleton, Colorado 80122
 Phone: (303)713-1898
 Fax: (303)713-1897
www.aztecconsultants.com

Q:162620-01 - MURPHY CREEK METRO DISTRICT LEGALS\DWG\EXHIBITS\

YALE METRO DISTRICT 2
 SEC. 30, T.4S., R.65W., 6TH P.M.
 ARAPAHOE COUNTY, COLORADO

JOB NUMBER 162620-01 3 OF 4 SHEETS

ILLUSTRATION TO EXHIBIT A

LINE TABLE		
LINE	BEARING	LENGTH
L1	S00°23'47"E	211.57'
L2	S46°30'27"W	158.34'
L3	S26°02'14"W	290.03'
L4	N85°17'12"W	156.22'
L5	S45°01'55"W	308.01'
L6	S36°41'27"E	228.14'
L7	S26°28'20"E	334.61'
L8	S11°45'07"E	383.60'
L9	S27°05'04"E	350.82'
L10	S79°09'30"E	174.30'
L11	S50°41'20"E	130.40'
L12	S18°58'04"E	340.62'
L13	S01°10'51"E	352.31'
L14	S18°46'37"W	373.12'
L15	S76°00'46"W	241.30'
L16	N00°14'13"W	131.56'
L17	S89°47'08"W	175.27'
L18	S89°32'59"W	59.81'

CURVE TABLE			
CURVE	DELTA	RADIUS	LENGTH
C1	40°19'06"	780.00'	548.88'
C2	13°44'59"	710.00'	170.39'
C3	89°58'39"	780.00'	1224.91'
C4	90°00'00"	30.00'	47.12'

NOTE: THIS DRAWING DOES NOT REPRESENT A MONUMENTED LAND SURVEY AND IS ONLY INTENDED TO DEPICT THE ATTACHED LEGAL DESCRIPTION.

PATH: _____
 DWG NAME: YALE MD 2.DWG
 DWG: JEL CHK: JRW
 DATE: 12/8/2021
 SCALE: N/A



AZTEC
CONSULTANTS, INC.

300 East Mineral Ave,
 Suite 1
 Littleton, Colorado 80122
 Phone: (303)713-1898
 Fax: (303)713-1897
www.aztecconsultants.com

Q:162620-01 - MURPHY CREEK METRO DISTRICT LEGALS\DWG\EXHIBITS\

YALE METRO DISTRICT 2
 SEC. 30, T.4S., R.65W., 6TH P.M.
 ARAPAHOE COUNTY, COLORADO

JOB NUMBER 162620-01

4 OF 4 SHEETS