

EXHIBIT A

YALE METROPOLITAN DISTRICT NO. 1

A PARCEL OF LAND SITUATED IN SECTION 30, TOWNSHIP 4 SOUTH, RANGE 65 WEST OF THE SIXTH PRINCIPAL MERIDIAN, CITY OF AURORA, COUNTY OF ARAPAHOE, STATE OF COLORADO, BEING MORE PARTICULARLY DESCRIBED AS FOLLOWS:

COMMENCING AT THE NORTHWEST CORNER OF SAID SECTION 30, WHENCE THE NORTH LINE OF THE NORTHWEST QUARTER OF SAID SECTION 30 BEARS NORTH 89°22'12" EAST, A DISTANCE OF 2,640.16 FEET, WITH ALL BEARINGS HEREIN RELATIVE THERETO;

THENCE SOUTH 42°37'38" EAST, A DISTANCE OF 1,250.79 FEET TO THE **POINT OF BEGINNING**, BEING THE BEGINNING OF A NON-TANGENT CURVE CONCAVE EASTERLY HAVING A RADIUS OF 20.00 FEET, THE RADIUS POINT OF SAID CURVE BEARS SOUTH 56°26'32" EAST;

THENCE SOUTHERLY ALONG SAID CURVE THROUGH A CENTRAL ANGLE OF 86°31'25", AN ARC LENGTH OF 30.20 FEET;

THENCE SOUTH 52°57'57" EAST, A DISTANCE OF 104.86 FEET;

THENCE NORTH 47°27'03" EAST, A DISTANCE OF 37.46 FEET;

THENCE NORTH 86°48'30" EAST, A DISTANCE OF 56.79 FEET;

THENCE SOUTH 69°41'57" EAST, A DISTANCE OF 94.12 FEET;

THENCE NORTH 62°26'18" EAST, A DISTANCE OF 101.08 FEET;

THENCE NORTH 51°45'49" EAST, A DISTANCE OF 72.65 FEET;

THENCE NORTH 48°56'10" EAST, A DISTANCE OF 134.96 FEET;

THENCE NORTH 61°55'58" EAST, A DISTANCE OF 122.09 FEET;

THENCE NORTH 87°19'14" EAST, A DISTANCE OF 89.37 FEET;

THENCE SOUTH 18°32'52" EAST, A DISTANCE OF 301.51 FEET;

THENCE SOUTH 11°47'26" WEST, A DISTANCE OF 420.55 FEET;

THENCE SOUTH 30°26'18" EAST, A DISTANCE OF 432.83 FEET;

THENCE SOUTH 58°00'27" EAST, A DISTANCE OF 251.56 FEET;

THENCE SOUTH 07°16'01" EAST, A DISTANCE OF 304.54 FEET;

THENCE SOUTH 10°35'33" EAST, A DISTANCE OF 322.40 FEET;

THENCE SOUTH 85°22'01" EAST, A DISTANCE OF 220.00 FEET;

THENCE SOUTH 38°24'37" EAST, A DISTANCE OF 301.69 FEET;

THENCE SOUTH 35°40'26" WEST, A DISTANCE OF 220.22 FEET;
THENCE SOUTH 50°05'57" WEST, A DISTANCE OF 189.45 FEET;
THENCE SOUTH 62°51'19" WEST, A DISTANCE OF 335.09 FEET;
THENCE NORTH 84°08'25" WEST, A DISTANCE OF 1.53 FEET;
THENCE SOUTH 13°54'04" WEST, A DISTANCE OF 23.60 FEET TO THE BEGINNING OF A
TANGENT CURVE CONCAVE EASTERLY HAVING A RADIUS OF 371.50 FEET;
THENCE SOUTHERLY ALONG SAID CURVE THROUGH A CENTRAL ANGLE OF 53°38'00", AN ARC
LENGTH OF 347.75 FEET;
THENCE SOUTH 39°43'56" EAST, A DISTANCE OF 68.48 FEET;
THENCE NORTH 33°07'26" EAST, A DISTANCE OF 14.54 FEET;
THENCE NORTH 57°39'29" EAST, A DISTANCE OF 169.36 FEET;
THENCE NORTH 67°11'36" EAST, A DISTANCE OF 217.72 FEET;
THENCE NORTH 57°34'46" EAST, A DISTANCE OF 176.52 FEET;
THENCE NORTH 32°57'09" EAST, A DISTANCE OF 799.27 FEET;
THENCE SOUTH 45°20'40" EAST, A DISTANCE OF 111.36 FEET;
THENCE SOUTH 17°49'32" EAST, A DISTANCE OF 125.48 FEET;
THENCE SOUTH 31°20'05" EAST, A DISTANCE OF 335.28 FEET;
THENCE SOUTH 20°15'01" EAST, A DISTANCE OF 53.38 FEET;
THENCE SOUTH 25°40'01" WEST, A DISTANCE OF 57.78 FEET;
THENCE SOUTH 40°36'41" WEST, A DISTANCE OF 68.06 FEET;
THENCE SOUTH 68°28'16" WEST, A DISTANCE OF 178.39 FEET;
THENCE SOUTH 21°31'44" EAST, A DISTANCE OF 169.25 FEET;
THENCE NORTH 85°59'28" EAST, A DISTANCE OF 354.52 FEET;
THENCE SOUTH 08°28'59" EAST, A DISTANCE OF 259.02 FEET;
THENCE SOUTH 00°00'45" EAST, A DISTANCE OF 110.01 FEET;
THENCE NORTH 89°59'15" EAST, A DISTANCE OF 290.96 FEET TO THE BEGINNING OF A
TANGENT CURVE CONCAVE SOUTHERLY HAVING A RADIUS OF 900.00 FEET;
THENCE EASTERLY ALONG SAID CURVE THROUGH A CENTRAL ANGLE OF 10°01'42", AN ARC
LENGTH OF 157.52 FEET;
THENCE SOUTH 00°14'58" EAST, A DISTANCE OF 1,091.36 FEET;

THENCE SOUTH 89°42'49" WEST, A DISTANCE OF 2,286.81 FEET;

THENCE NORTH 03°50'05" WEST, A DISTANCE OF 629.99 FEET TO THE BEGINNING OF A TANGENT CURVE CONCAVE SOUTHWESTERLY HAVING A RADIUS OF 460.00 FEET;

THENCE NORTHWESTERLY ALONG SAID CURVE THROUGH A CENTRAL ANGLE OF 46°27'26", AN ARC LENGTH OF 372.98 FEET;

THENCE NORTH 50°17'31" WEST, A DISTANCE OF 0.14 FEET;

THENCE NORTH 61°30'28" EAST, A DISTANCE OF 407.80 FEET;

THENCE NORTH 53°34'25" EAST, A DISTANCE OF 179.91 FEET;

THENCE NORTH 33°07'26" EAST, A DISTANCE OF 75.48 FEET;

THENCE NORTH 39°43'56" WEST, A DISTANCE OF 86.06 FEET TO THE BEGINNING OF A TANGENT CURVE CONCAVE EASTERLY HAVING A RADIUS OF 428.50 FEET;

THENCE NORTHERLY ALONG SAID CURVE THROUGH A CENTRAL ANGLE OF 53°38'00", AN ARC LENGTH OF 401.11 FEET;

THENCE NORTH 13°54'04" EAST, A DISTANCE OF 15.55 FEET;

THENCE NORTH 84°08'25" WEST, A DISTANCE OF 17.34 FEET;

THENCE NORTH 33°08'47" WEST, A DISTANCE OF 70.86 FEET;

THENCE NORTH 09°47'30" EAST, A DISTANCE OF 255.22 FEET;

THENCE NORTH 06°34'41" WEST, A DISTANCE OF 245.14 FEET;

THENCE NORTH 20°13'05" WEST, A DISTANCE OF 264.09 FEET;

THENCE NORTH 32°50'43" WEST, A DISTANCE OF 131.24 FEET;

THENCE NORTH 55°58'11" WEST, A DISTANCE OF 286.35 FEET;

THENCE SOUTH 82°09'52" WEST, A DISTANCE OF 145.46 FEET;

THENCE NORTH 53°11'38" WEST, A DISTANCE OF 19.76 FEET TO THE BEGINNING OF A NON-TANGENT CURVE CONCAVE EASTERLY HAVING A RADIUS OF 221.50 FEET, THE RADIUS POINT OF SAID CURVE BEARS SOUTH 65°00'11" EAST;

THENCE SOUTHERLY ALONG SAID CURVE THROUGH A CENTRAL ANGLE OF 09°37'06", AN ARC LENGTH OF 37.18 FEET;

THENCE SOUTH 15°22'43" WEST, A DISTANCE OF 115.00 FEET TO THE BEGINNING OF A TANGENT CURVE CONCAVE NORTHWESTERLY HAVING A RADIUS OF 278.50 FEET;

THENCE SOUTHWESTERLY ALONG SAID CURVE THROUGH A CENTRAL ANGLE OF 17°53'05", AN ARC LENGTH OF 86.93 FEET;

THENCE NORTH 79°09'30" WEST, A DISTANCE OF 63.08 FEET TO THE BEGINNING OF A NON-TANGENT CURVE CONCAVE NORTHWESTERLY HAVING A RADIUS OF 221.50 FEET, THE RADIUS POINT OF SAID CURVE BEARS NORTH 50°30'03" WEST;

THENCE NORTHEASTERLY ALONG SAID CURVE THROUGH A CENTRAL ANGLE OF 24°07'14", AN ARC LENGTH OF 93.25 FEET;

THENCE NORTH 15°22'43" EAST, A DISTANCE OF 115.00 FEET TO THE BEGINNING OF A TANGENT CURVE CONCAVE EASTERLY HAVING A RADIUS OF 278.50 FEET;

THENCE NORTHERLY ALONG SAID CURVE THROUGH A CENTRAL ANGLE OF 13°39'02", AN ARC LENGTH OF 66.35 FEET;

THENCE NORTH 02°25'39" WEST, A DISTANCE OF 104.54 FEET;

THENCE NORTH 08°45'30" WEST, A DISTANCE OF 537.16 FEET;

THENCE NORTH 18°14'09" WEST, A DISTANCE OF 248.87 FEET;

THENCE NORTH 38°24'49" WEST, A DISTANCE OF 191.90 FEET;

THENCE NORTH 37°09'26" WEST, A DISTANCE OF 121.18 FEET;

THENCE NORTH 47°27'03" EAST, A DISTANCE OF 30.62 FEET;

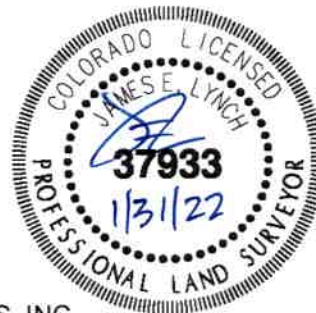
THENCE NORTH 52°57'57" WEST, A DISTANCE OF 94.39 FEET TO THE BEGINNING OF A TANGENT CURVE CONCAVE SOUTHERLY HAVING A RADIUS OF 20.00 FEET;

THENCE WESTERLY ALONG SAID CURVE THROUGH A CENTRAL ANGLE OF 86°31'30", AN ARC LENGTH OF 30.20 FEET TO A POINT OF CUSP OF A CURVE CONCAVE NORTHWESTERLY HAVING A RADIUS OF 780.00 FEET, THE RADIUS POINT OF SAID CURVE BEARS NORTH 49°29'27" WEST;

THENCE NORTHEASTERLY ALONG SAID CURVE THROUGH A CENTRAL ANGLE OF 06°57'05", AN ARC LENGTH OF 94.63 FEET TO THE **POINT OF BEGINNING**.

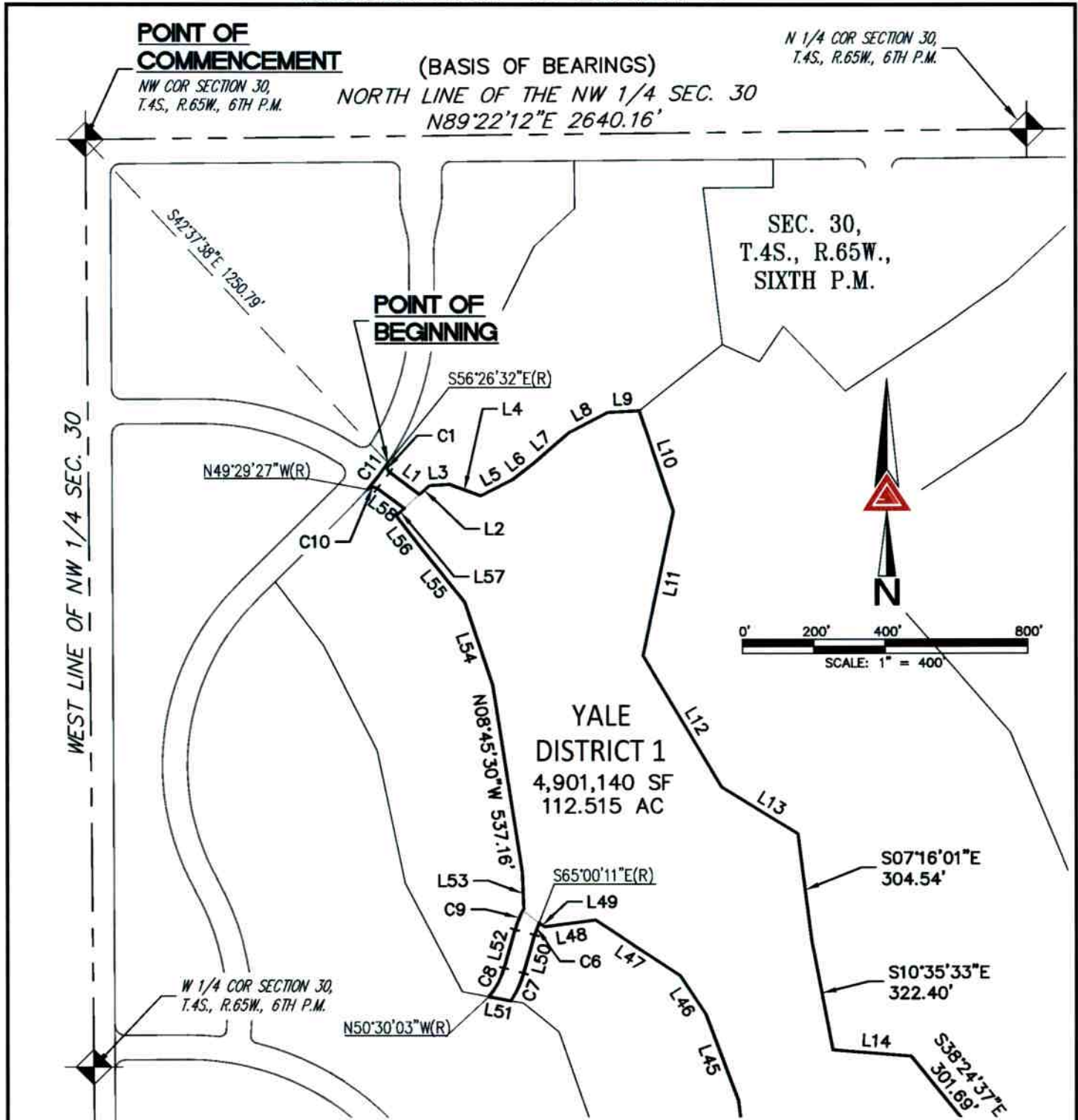
CONTAINING AN AREA OF 112.515 ACRES, (4,901,140 SQUARE FEET), MORE OR LESS.

ILLUSTRATION ATTACHED AND MADE A PART HEREOF.



JAMES E. LYNCH, PLS 37933
FOR AND ON BEHALF OF AZTEC CONSULTANTS, INC.
300 E. MINERAL AVE., SUITE 1, LITTLETON, CO 80122
303-713-1898

ILLUSTRATION TO EXHIBIT A



NOTE: THIS DRAWING DOES NOT REPRESENT A MONUMENTED LAND SURVEY AND IS ONLY INTENDED TO DEPICT THE ATTACHED LEGAL DESCRIPTION.

PATH:
DWG NAME: YALE MD 1.DWG
DWG: JEL CHK: JRW
DATE: 1/31/2022
SCALE: 1" = 400'

AZTEC
CONSULTANTS, INC.

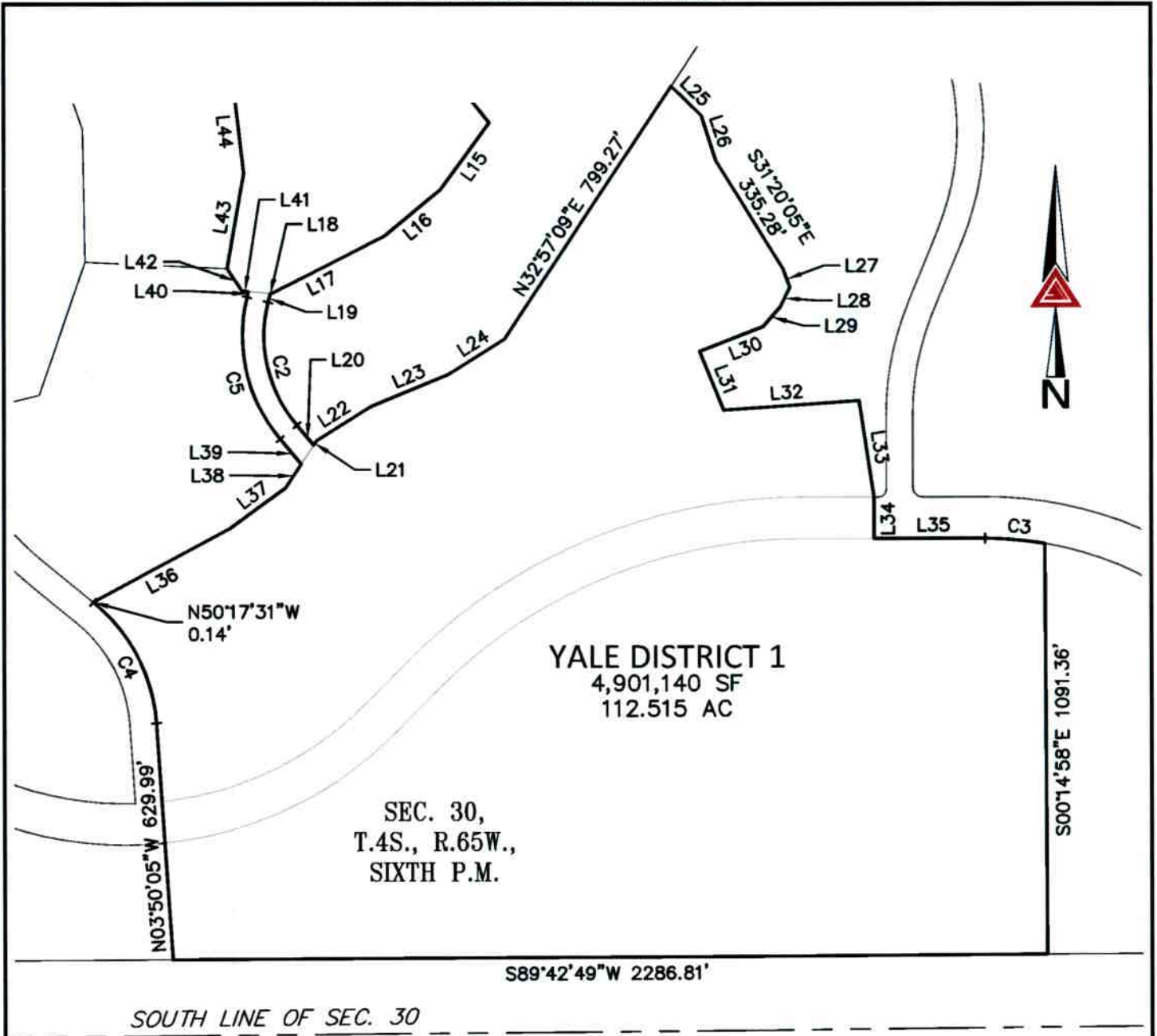
300 East Mineral Ave,
Suite 1
Littleton, Colorado 80122
Phone: (303)713-1898
Fax: (303)713-1897
www.aztecconsultants.com

Q:162620-01 - MURPHY CREEK METRO DISTRICT LEGALS\DWG\EXHIBITS\

YALE METRO DISTRICT 1
SEC. 30, T.4S., R.65W., 6TH P.M.
ARAPAHOE COUNTY, COLORADO

JOB NUMBER 162620-01 5 OF 7 SHEETS

ILLUSTRATION TO EXHIBIT A



NOTE: THIS DRAWING DOES NOT REPRESENT A MONUMENTED LAND SURVEY AND IS ONLY INTENDED TO DEPICT THE ATTACHED LEGAL DESCRIPTION.

PATH:
 DWG NAME: YALE MD 1.DWG
 DWG: JEL CHK: JRW
 DATE: 1/31/2022
 SCALE: 1" = 400'

AZTEC
 CONSULTANTS, INC.

300 East Mineral Ave.
 Suite 1
 Littleton, Colorado 80122
 Phone: (303)713-1898
 Fax: (303)713-1897
 www.aztecconsultants.com

Q:162620-01 - MURPHY CREEK METRO DISTRICT LEGALS\DWG\EXHIBITS\

YALE METRO DISTRICT 1
 SEC. 30, T.4S., R.65W., 6TH P.M.
 ARAPAHOE COUNTY, COLORADO

JOB NUMBER 162620-01 6 of 7 SHEETS

ILLUSTRATION TO EXHIBIT A

LINE TABLE		
LINE	BEARING	LENGTH
L1	S52°57'57"E	104.86'
L2	N47°27'03"E	37.46'
L3	N86°48'30"E	56.79'
L4	S69°41'57"E	94.12'
L5	N62°26'18"E	101.08'
L6	N51°45'49"E	72.65'
L7	N48°56'10"E	134.96'
L8	N61°55'58"E	122.09'
L9	N87°19'14"E	89.37'
L10	S18°32'52"E	301.51'
L11	S11°47'26"W	420.55'
L12	S30°26'18"E	432.83'
L13	S58°00'27"E	251.56'
L14	S85°22'01"E	220.00'
L15	S35°40'26"W	220.22'
L16	S50°05'57"W	189.45'
L17	S62°51'19"W	335.09'
L18	N84°08'25"W	1.53'
L19	S13°54'04"W	23.60'
L20	S39°43'56"E	68.48'

LINE TABLE		
LINE	BEARING	LENGTH
L21	N33°07'26"E	14.54'
L22	N57°39'29"E	169.36'
L23	N67°11'36"E	217.72'
L24	N57°34'46"E	176.52'
L25	S45°20'40"E	111.36'
L26	S17°49'32"E	125.48'
L27	S20°15'01"E	53.38'
L28	S25°40'01"W	57.78'
L29	S40°36'41"W	68.06'
L30	S68°28'16"W	178.39'
L31	S21°31'44"E	169.25'
L32	N85°59'28"E	354.52'
L33	S08°28'59"E	259.02'
L34	S00°00'45"E	110.01'
L35	N89°59'15"E	290.96'
L36	N61°30'28"E	407.80'
L37	N53°34'25"E	179.91'
L38	N33°07'26"E	75.48'
L39	N39°43'56"W	86.06'
L40	N13°54'04"E	15.55'

LINE TABLE		
LINE	BEARING	LENGTH
L41	N84°08'25"W	17.34'
L42	N33°08'47"W	70.86'
L43	N09°47'30"E	255.22'
L44	N06°34'41"W	245.14'
L45	N20°13'05"W	264.09'
L46	N32°50'43"W	131.24'
L47	N55°58'11"W	286.35'
L48	S82°09'52"W	145.46'
L49	N53°11'38"W	19.76'
L50	S15°22'43"W	115.00'
L51	N79°09'30"W	63.08'
L52	N15°22'43"E	115.00'
L53	N02°25'39"W	104.54'
L54	N18°14'09"W	248.87'
L55	N38°24'49"W	191.90'
L56	N37°09'26"W	121.18'
L57	N47°27'03"E	30.62'
L58	N52°57'57"W	94.39'

CURVE TABLE			
CURVE	DELTA	RADIUS	LENGTH
C1	86°31'25"	20.00'	30.20'
C2	53°38'00"	371.50'	347.75'
C3	10°01'42"	900.00'	157.52'
C4	46°27'26"	460.00'	372.98'
C5	53°38'00"	428.50'	401.11'
C6	9°37'06"	221.50'	37.18'

CURVE TABLE			
CURVE	DELTA	RADIUS	LENGTH
C7	17°53'05"	278.50'	86.93'
C8	24°07'14"	221.50'	93.25'
C9	13°39'02"	278.50'	66.35'
C10	86°31'30"	20.00'	30.20'
C11	6°57'05"	780.00'	94.63'

NOTE: THIS DRAWING DOES NOT REPRESENT A MONUMENTED LAND SURVEY AND IS ONLY INTENDED TO DEPICT THE ATTACHED LEGAL DESCRIPTION.

PATH: _____
 DWG NAME: YALE MD 1.DWG
 DWG: JEL CHK: JRW
 DATE: 1/31/2022
 SCALE: N/A



300 East Mineral Ave,
 Suite 1
 Littleton, Colorado 80122
 Phone: (303)713-1898
 Fax: (303)713-1897
 www.aztecconsultants.com

Q:162620-01 - MURPHY CREEK METRO DISTRICT LEGALS\DWG\EXHIBITS\

YALE METRO DISTRICT 1
 SEC. 30, T.4S., R.65W., 6TH P.M.
 ARAPAHOE COUNTY, COLORADO

JOB NUMBER 162620-01

7 of 7 SHEETS